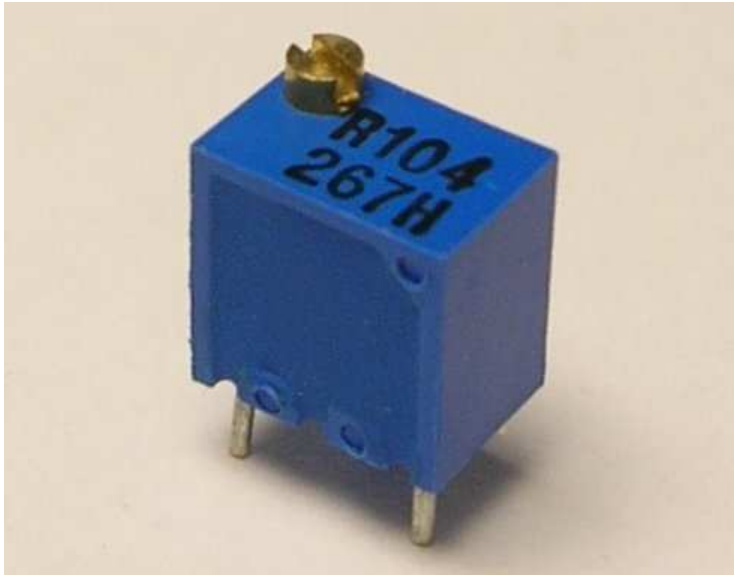


MULTITURN 6 mm CERMET TRIMMERS

LIST OF PART NUMBERS



Adjustment position	Shape of terminal (Top view)	Form of packaging Rail Tube	Piece in package
Top adjustment		3266W	50 pcs./pack
Side adjustment (↑ adjustment Direction)		3266X	
Side adjustment (↑ adjustment Direction)		3266P	
Top adjustment		3266Y	
Top adjustment		3266Z	

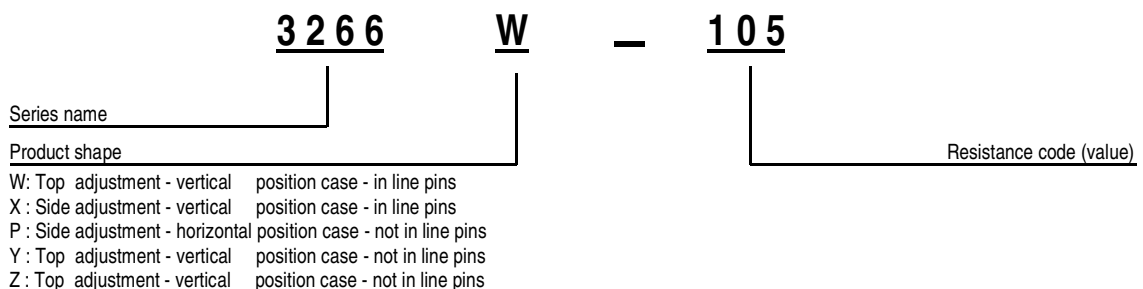
FEATURES

- MULTITURN / CERMET / INDUSTRIAL / SEALED
- WIDE OPERATING TEMPERATURE RANGE
- GOOD STABILITY
- LOW TEMPERATURE COEFFICIENT
- WIDE OHMIC RANGE

COMPLIANCE APPROVAL

National standard= GB/TI5298-94
 Enterprise Standard= Q/RV256-2000
 National Military Standard= GJB918-90
 WI Cermet Trimming Potentiometer Military Production Line
 Certificate No.= COC-L-136-2000
 Quality Standard = idt ISO 9001:2000 - GB/T 19001-2000

PART NUMBER DESIGNATION



Electron is a brand of

Believe S.r.l.

Via Lago di Trasimeno, 21 I-36015 Schio VI Italy

Phone +39 0445 579035 Fax +39 0445 575708

Email: info@lievore.com

Specifications are subject to change without notice. Specifications in this data sheet are for reference.

MULTITURN 6 mm CERMET TRIMMERS

■ ELECTRICAL CHARACTERISTICS

Nominal resistance range	10 Ω ~ 1 MΩ
Nominal resistance tolerance	±10% (Tighter tolerance available)
Power ratings	0.25 W (70°C)
Resistance law	Linear law
Maximun input voltage	DC 300 V
Maximun wiper current	100 mA
Effective electrical turn	12 TURNS + / - 2
End resistance	≤1% or 2Ω max (Whichever is greater)
C.R.V.	≤3% or 3Ω max (Whichever is greater)
Operating temp. range	-55 ~ + 125 °C
Temp. coefficient	10 Ω ~ 20Ω ± 250 ppm/°C 50 Ω ~ 2MΩ ± 100 ppm/°C
Insulation resistance	1000 MΩ minimun (DC 500V)
Dielectric strenght	101,3kpa,600Vac;8,5kpa,250Vac
Net Weight	Approx. 0,28 gr.

■ MECHANICAL CHARACTERISTICS

Mechanical turn	12 ± 2 TURNS
Operating torque	25 mN . m(357 gf.cm) max
Mechanical stop	Wiper idles
Rotational life	200 cycles[ΔR/R ≤ 3 %]
Terminal Strenght	8 N minimun tensile strenght
Thrust to shaft	4 N maximun
Solderability	235 °C for 2 sec.

<Nominal resistance values>

10Ω	20Ω	50Ω	100Ω	200Ω	500Ω	1KΩ	2KΩ	5KΩ
10KΩ	20KΩ	50KΩ	100KΩ	200KΩ	500KΩ	1MΩ		

■ ENVIROMENTAL CHARACTERISTICS

Test item	Test condicions	Specifications
Thermal shock	-55 ~ 125 ° C (0,5 h) , 5 cycles	ΔR/R ≤ ±2% S.S ≤ ±1%
Humidity	-10~65°C(-80~98 RH) 10 cycles , 240 h	ΔR/R ≤ ±3% S.S ≤ ±1%
Shock	490 m/ s, 6ms 6 direction for 3 times each	ΔR/R ≤ ±1%R S.S ≤ ±2%
Vibration *	Amplitude of 1,52mm or Acceleration of 98 m/s, 10~2000 hz, 3 direction.	
Load life *	70°C, 0.5W, 1000 h	ΔR/R ≤ 3% S.S ≤ 3%
Low temp.operation	- 55° C 2 h	ΔR/R ≤ ±2% S.S ≤ ±1%
High temp.operation	125° C 250 h	ΔR/R ≤ ±2% S.S ≤ ±1%
Immersion seal	85° C 60 s	No leaks
Soldering heat	350° C 3 s	ΔR/R ≤ ±3%

Electron is a brand of

Believe S.r.l.

Via Lago di Trasimeno, 21 I-36015 Schio VI Italy

Phone +39 0445 579035 Fax +39 0445 575708

Email: info@iievore.com

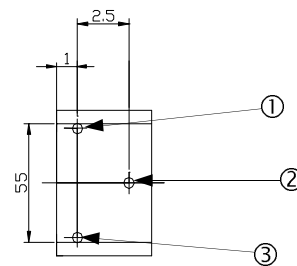
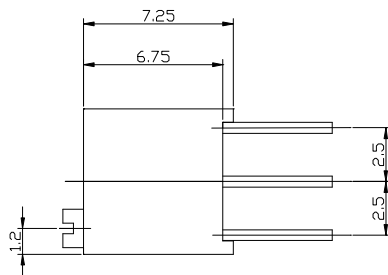
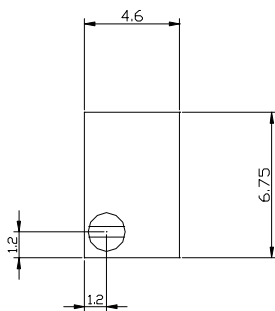
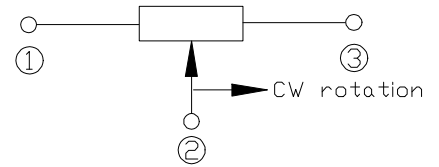
Specifications are subject to change without notice. Specifications in this data sheet are for reference .

MULTITURN 6 mm CERMET TRIMMERS

■ OUTLINE DIMENSIONS

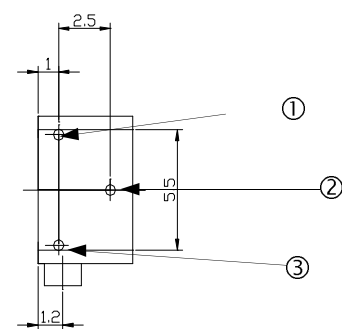
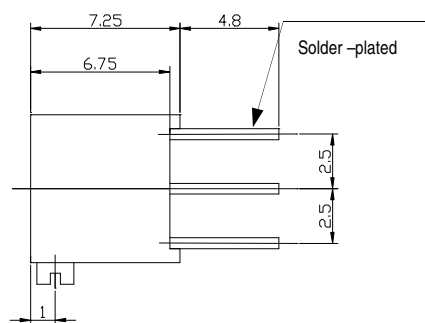
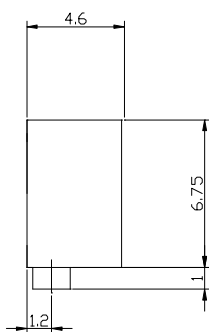
3266W Top adjustment

Unless otherwise specified, tolerance:0,3



3266X Side adjustment

1.8 - $\varnothing 0,5 \pm 0.05$



Electron is a brand of

Believe S.r.l.

Via Lago di Trasimeno, 21 I-36015 Schio VI Italy

Phone +39 0445 579035 Fax +39 0445 575708

Email: info@lievore.com

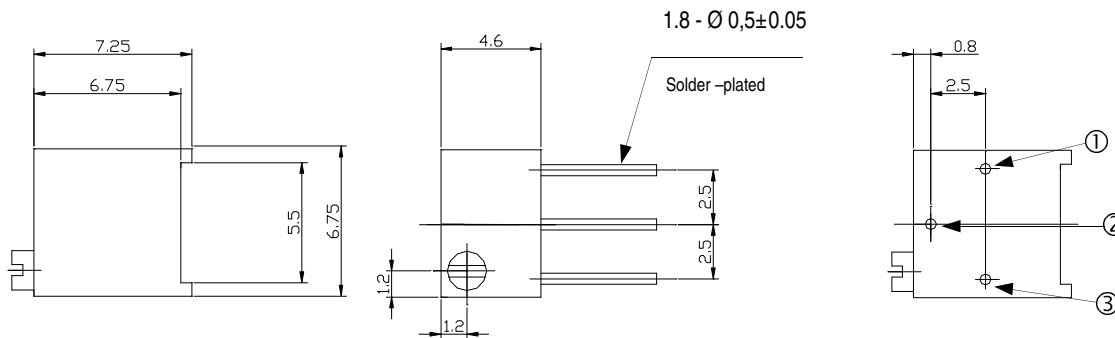
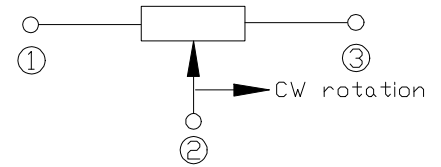
Specifications are subject to change without notice. Specifications in this data sheet are for reference.

MULTITURN 6 mm CERMET TRIMMERS

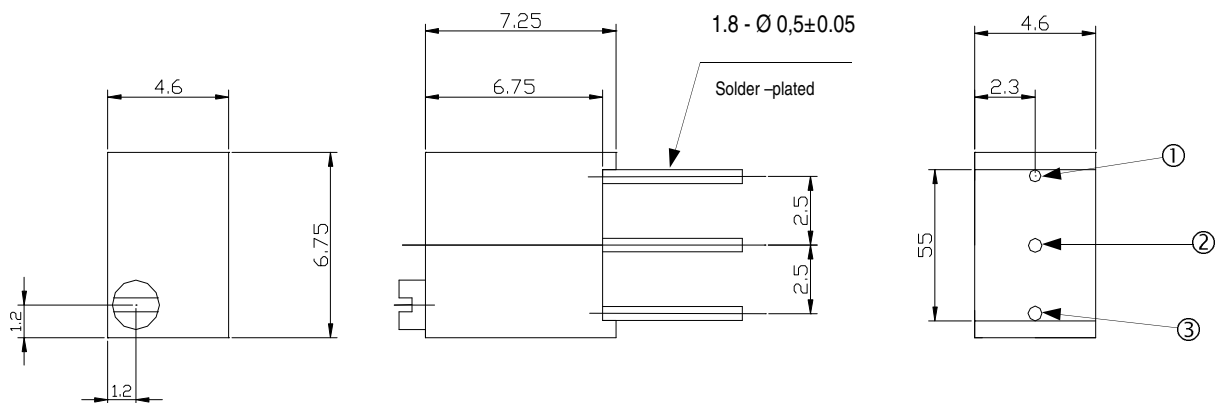
■ OUTLINE DIMENSIONS

3266P Top adjustment

Unless otherwise specified, tolerance:0,3



3266Y Side adjustment



Electron is a brand of

Believe S.r.l.

Via Lago di Trasimeno, 21 I-36015 Schio VI Italy

Phone +39 0445 579035 Fax +39 0445 575708

Email: info@lievore.com

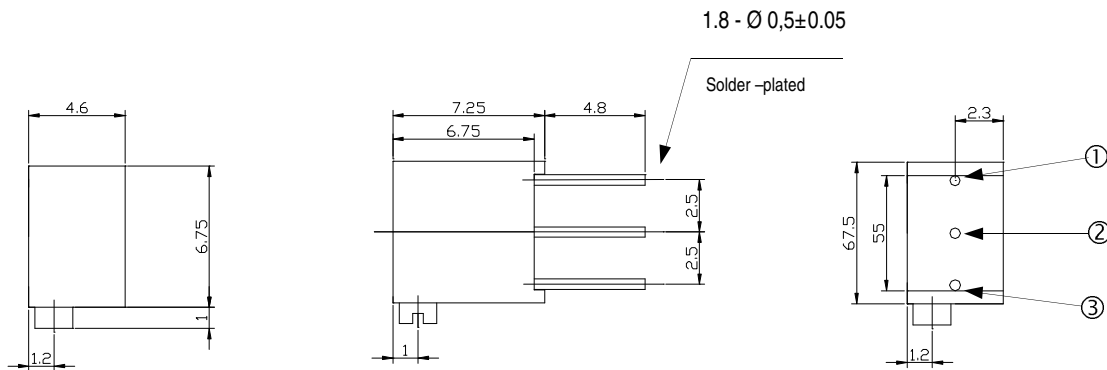
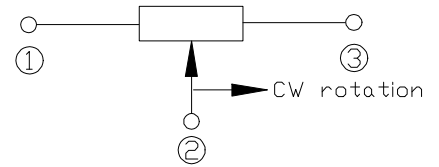
Specifications are subject to change without notice. Specifications in this data sheet are for reference.

MULTITURN 6 mm CERMET TRIMMERS

■ OUTLINE DIMENSIONS

3266Z Top adjustment

Unless otherwise specified, tolerance:0,3



Electron is a brand of

Believe S.r.l.

Via Lago di Trasimeno, 21 I-36015 Schio VI Italy

Phone +39 0445 579035 Fax +39 0445 575708

Email: info@lievore.com

Specifications are subject to change without notice. Specifications in this data sheet are for reference.